



MetroWest+

Portishead Branch Line (MetroWest Phase 1)

TR040011

Applicant: North Somerset District Council

6.25, Environmental Statement, Volume 4, Technical Appendices, Appendix 16.1:

Transport Assessment (Part 3 of 18) – FIGURES vol 2

The Infrastructure Planning (Applications: Prescribed Forms and Procedure)

Regulations 2009, Regulation 5(2)(a)

Planning Act 2008

Author: CH2M

Date: November 2019



LIST OF FIGURES – in Part 3 of Appendix 16.1

Figure 4 1: Indicative land uses in the vicinity of Portishead Station

Figure 4 2: Indicative land uses in the vicinity of Pill Station

Figure 4 3: Indicative land uses in the vicinity of Ashton Vale Road

Figure 4 4: Committed developments in the vicinity of the DCO application area –
Portishead

Figure 4 5: Committed developments in the vicinity of the DCO application – Pill and
East-in-Gordano area

Figure 4 6: Committed developments in the vicinity of the DCO application – Ashton
Vale area

Figure 4 7: Principal and main roads in Portishead

Figure 4 8: Principal and Main Roads in Pill

Figure 4 9: Principal and main roads in Ashton Vale

Figure 4 25: Weight restrictions

Figure 4 26: Parking restrictions in Portishead

Figure 4 27: Parking restrictions in Pill

Figure 4 28: Parking restrictions in Ashton Vale

Figure 4 29: ATC Locations in in Portishead

Figure 4 30: ATC Locations in Pill

SECTION 4

Existing Conditions

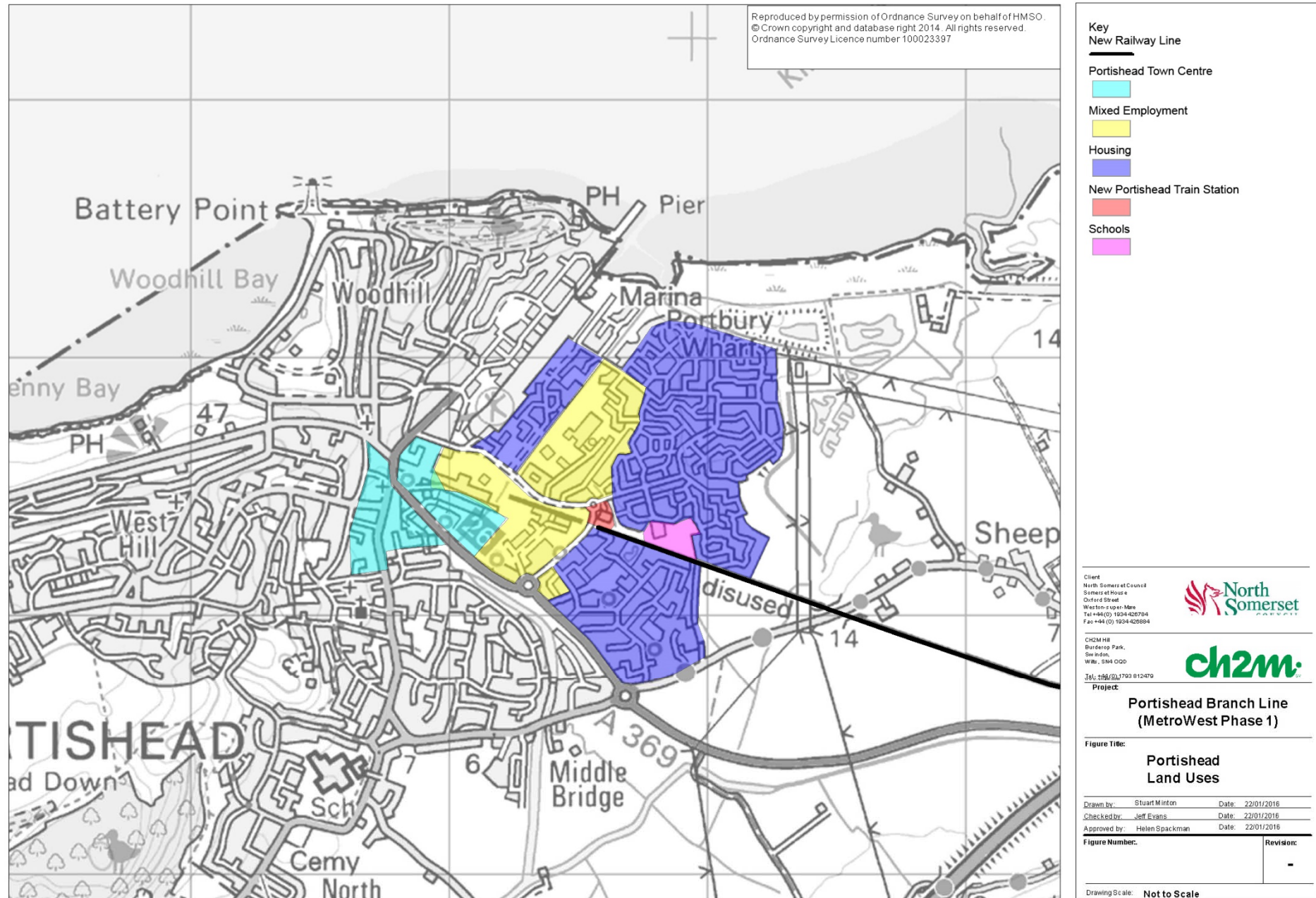


Figure 4-1: Indicative land uses in the vicinity of Portishead Station

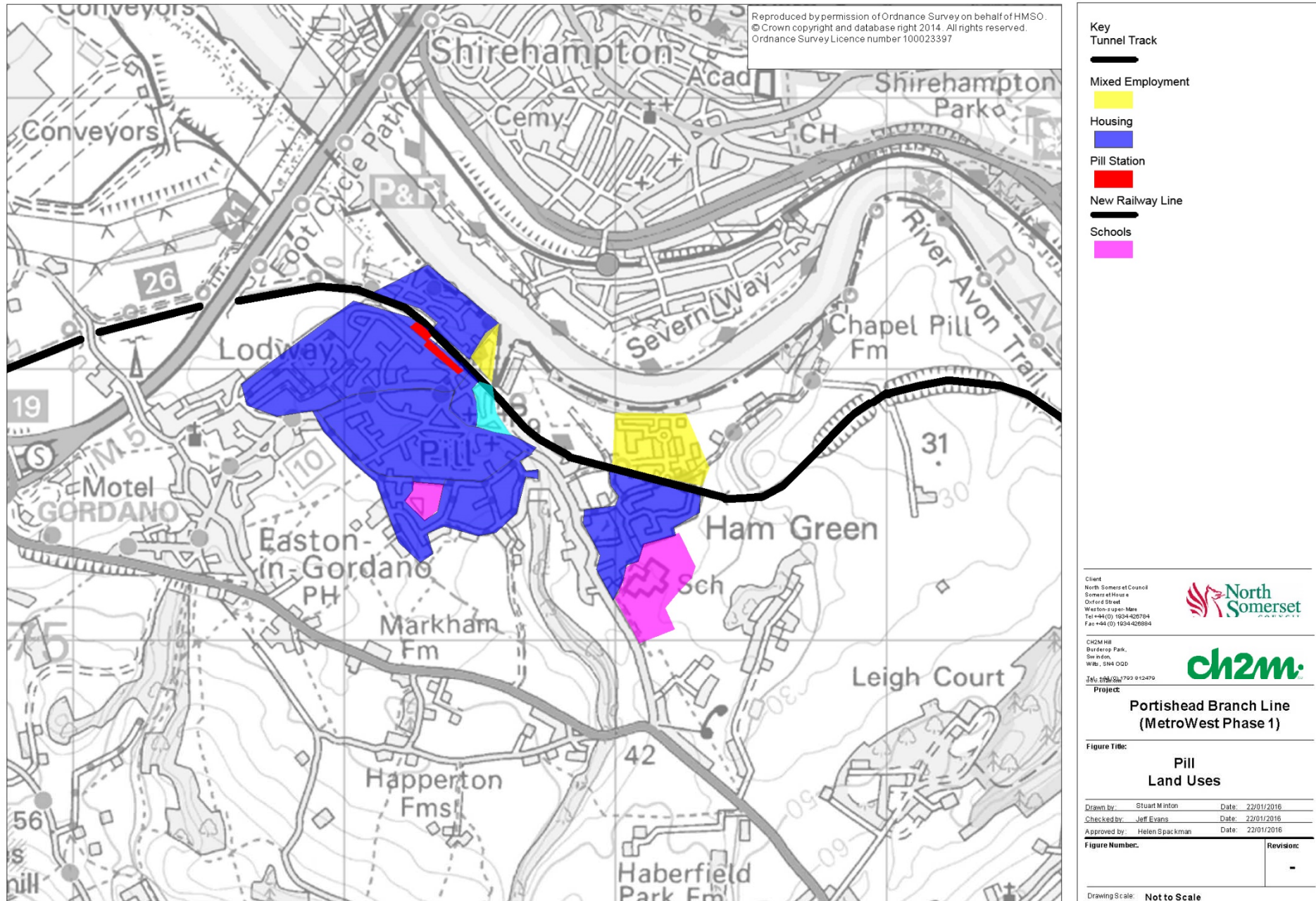


Figure 4-2: Indicative land uses in the vicinity of Pill Station

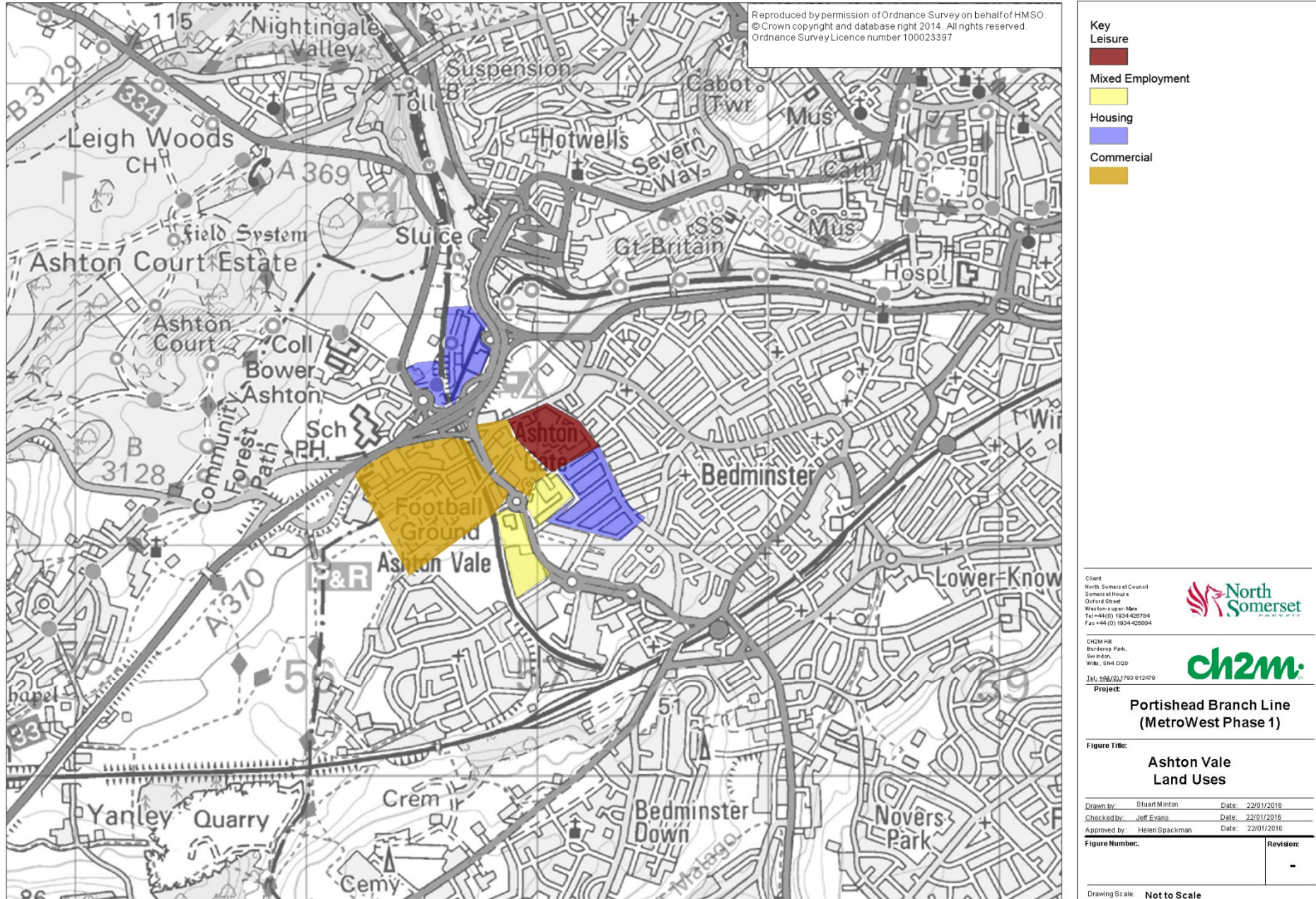


Figure 4-3: Indicative land uses in the vicinity of Ashton Vale Road

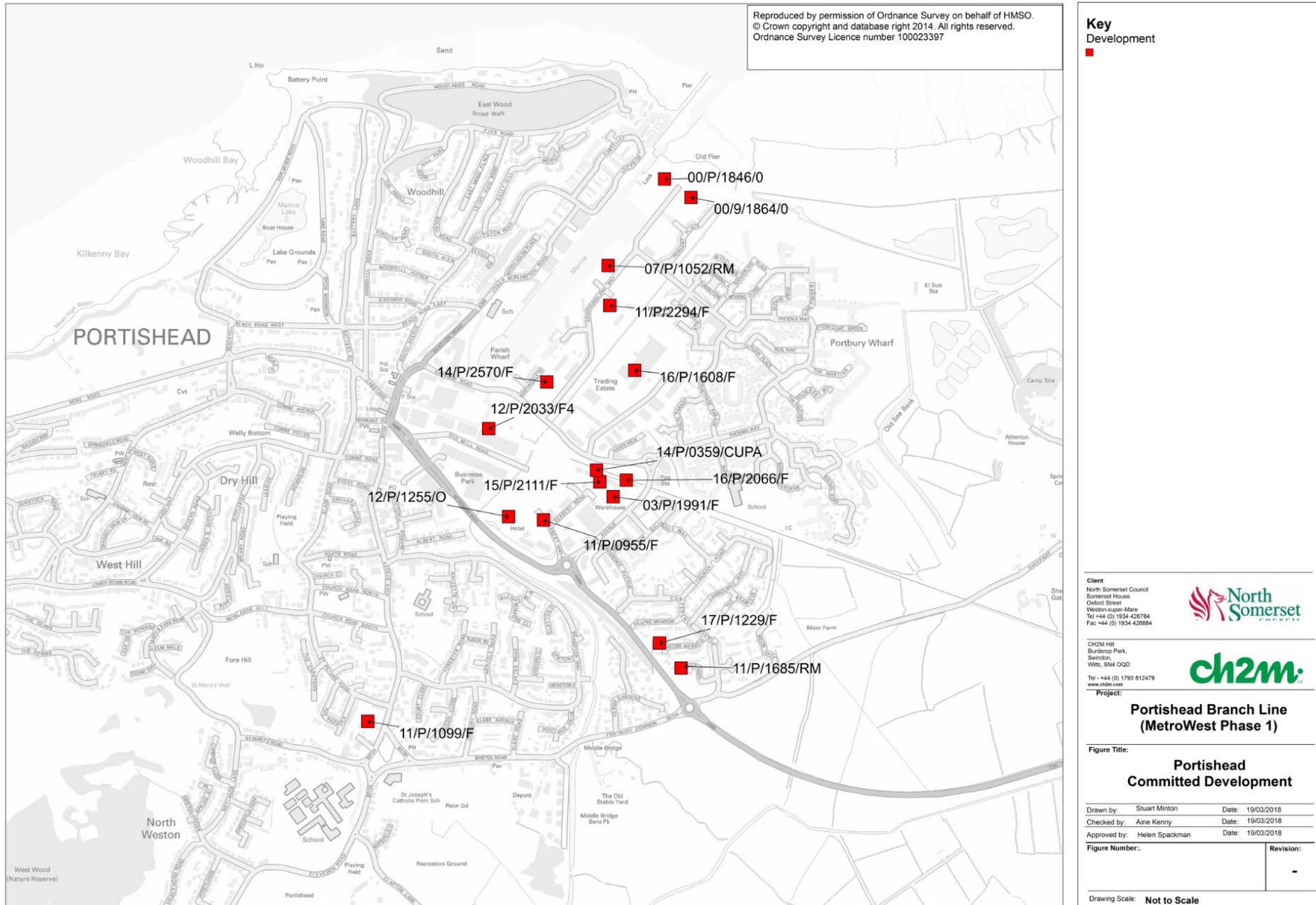


Figure 4-4: Committed developments in the vicinity of the DCO application area – Portishead

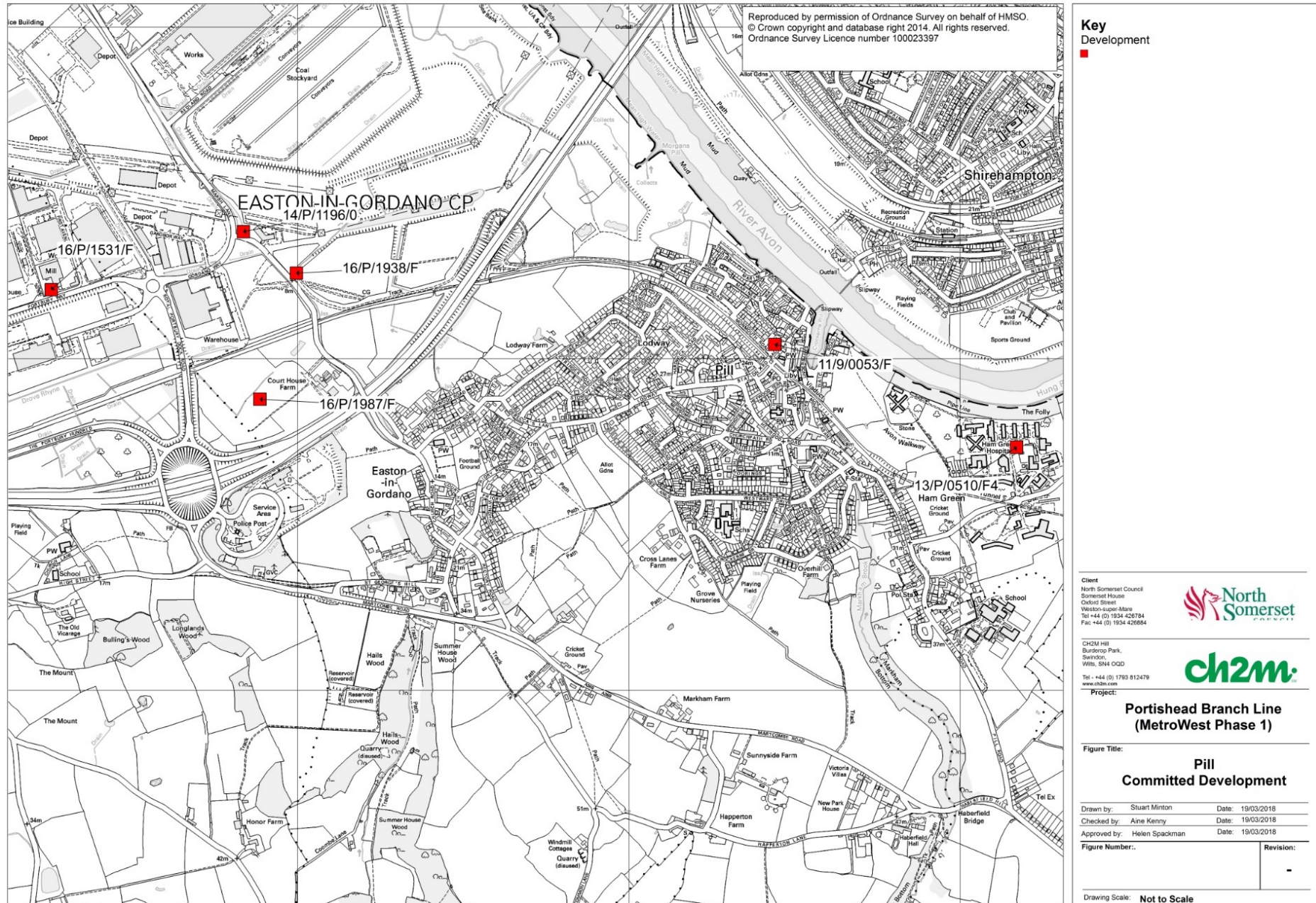


Figure 4-5: Committed developments in the vicinity of the DCO application – Pill and East-in-Gordano area

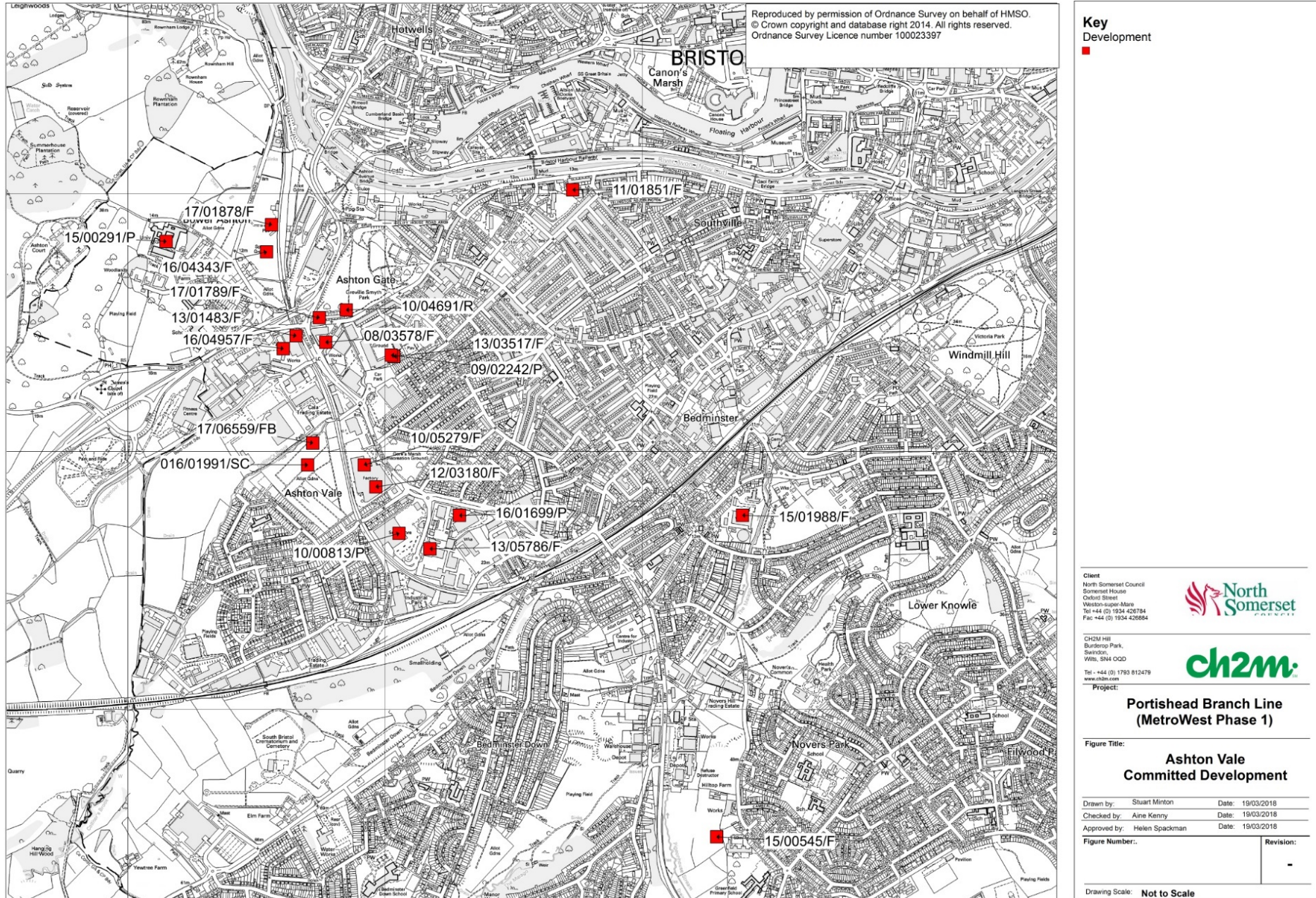


Figure 4-6: Committed developments in the vicinity of the DCO application – Ashton Vale area

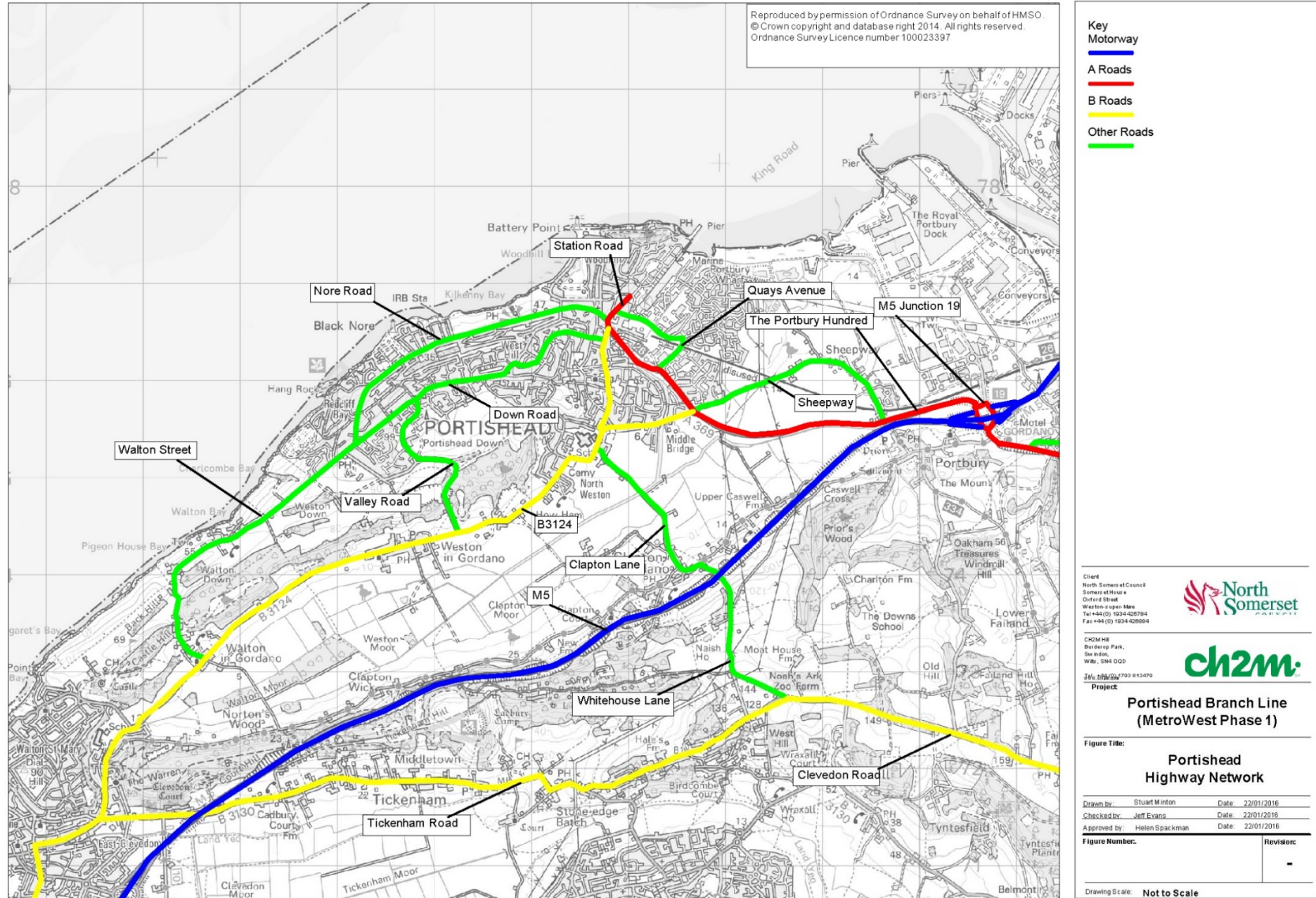


Figure 4-7: Principal and main roads in Portishead

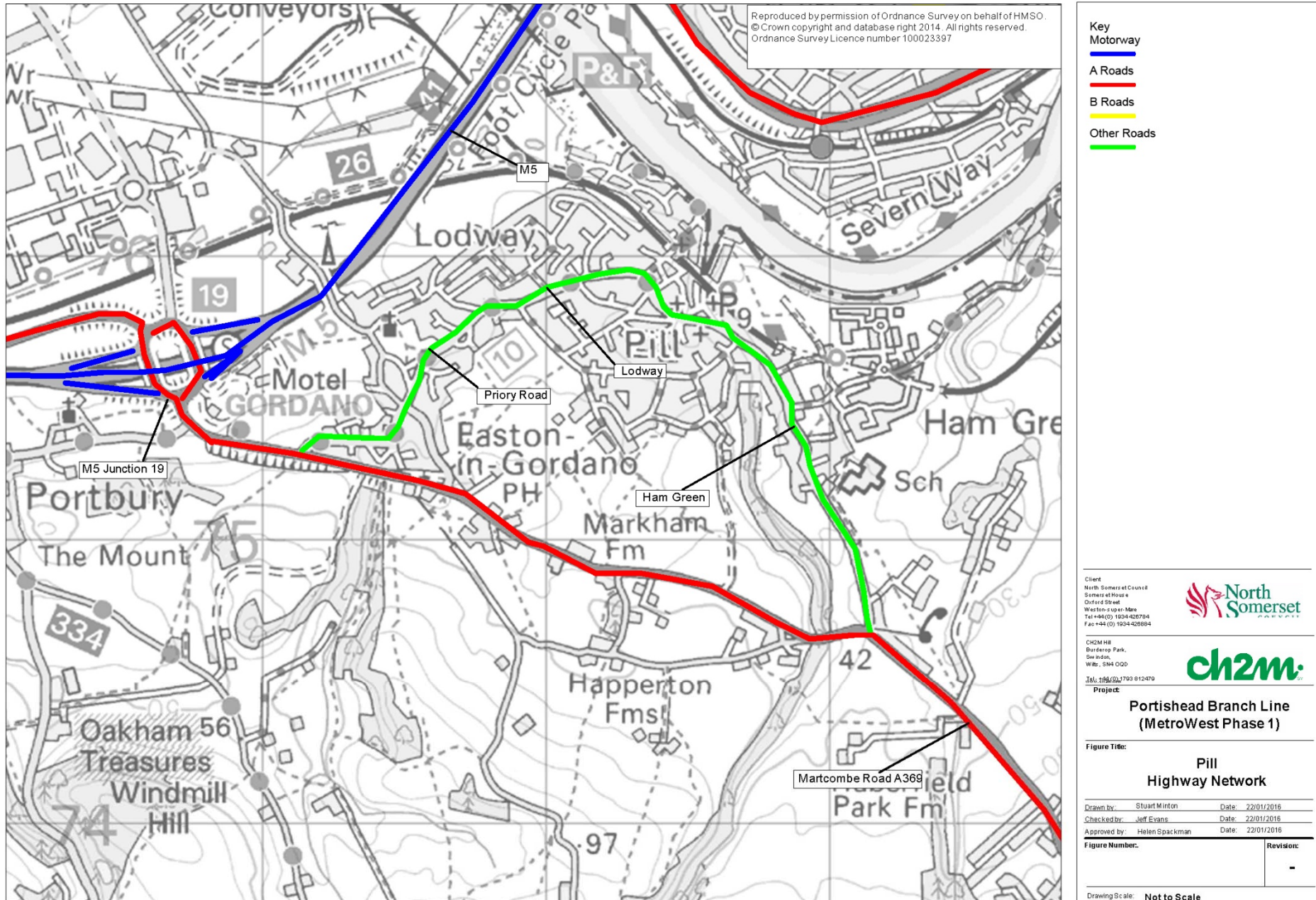


Figure 4-8: Principal and Main Roads in Pill

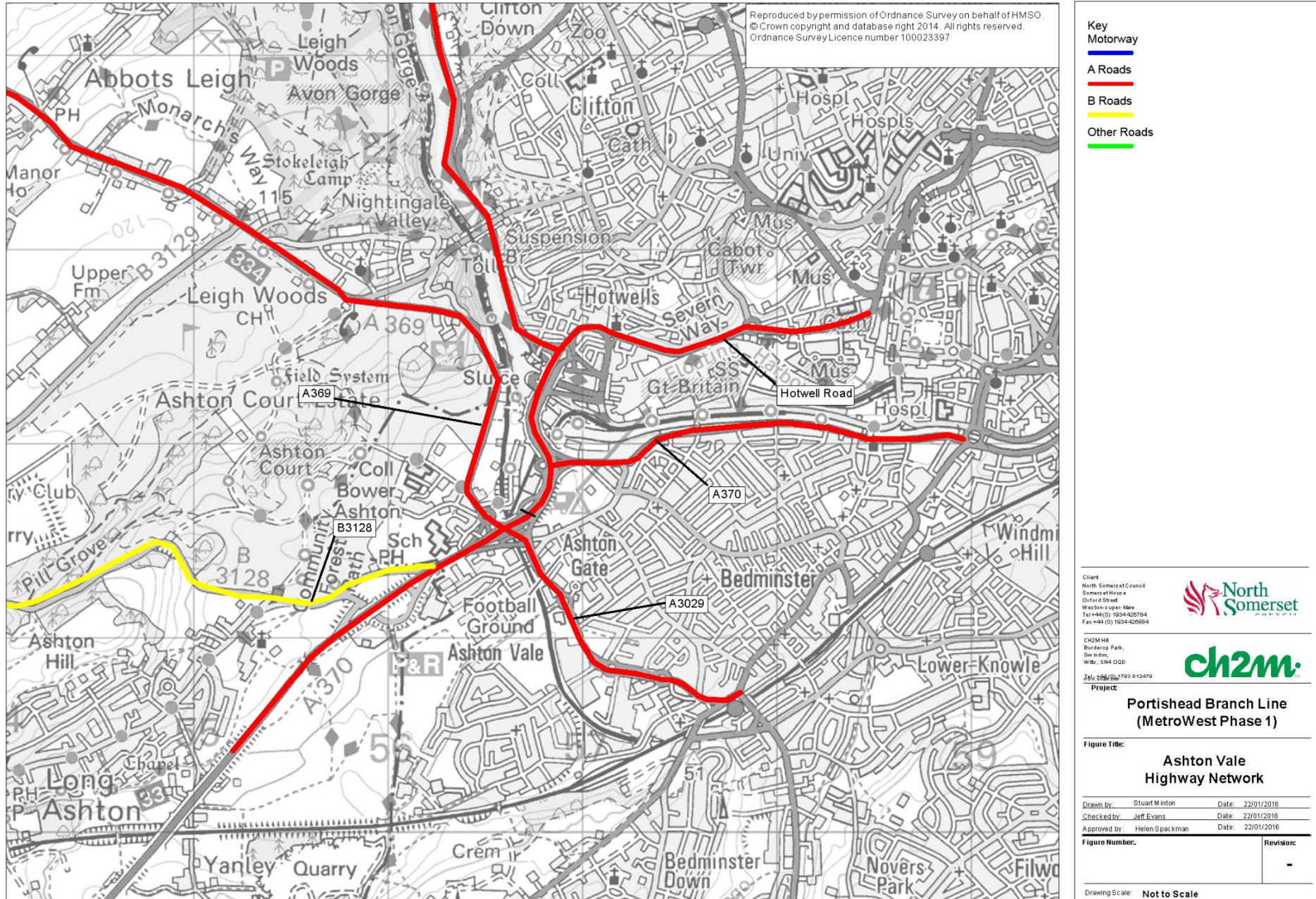


Figure 4-9: Principal and main roads in Ashton Vale

Located in Part 1 of Appendix 16.1

Figure 4-10: Portishead station site and local highway network

Located in Part 1 of Appendix 16.1

Figure 4-11: Port Marine – Phoenix Way

Located in Part 1 of Appendix 16.1

Figure 4-12: Port Marine – Marjoram Wy in vicinity of Trinity Primary School

Located in Part 1 of Appendix 16.1

Figure 4-13: Newfoundland Way

Located in Part 1 of Appendix 16.1

Figure 4-14: Harbour Road – in the vicinity of the Marina Health Centre

Located in Part 1 of Appendix 16.1

Figure 4-15: Haven Way

Located in Part 1 of Appendix 16.1

Figure 4-16: Serbert Way

Located in Part 1 of Appendix 16.1

Figure 4-17: Galingale Way

Located in Part 1 of Appendix 16.1

Figure 4-18: Pill station site and local highway network

Located in Part 1 of Appendix 16.1

Figure 4-19: Station Road Pill

Located in Part 1 of Appendix 16.1

Figure 4-20: Avon Road, Pill

Located in Part 1 of Appendix 16.1

Figure 4-21: Hardwick Road

Located in Part 1 of Appendix 16.1

Figure 4-22: Monmouth Court

Located in Part 1 of Appendix 16.1

Figure 4-23: Monmouth Road

Located in Part 1 of Appendix 16.1

Figure 4-24: Samborne Lane

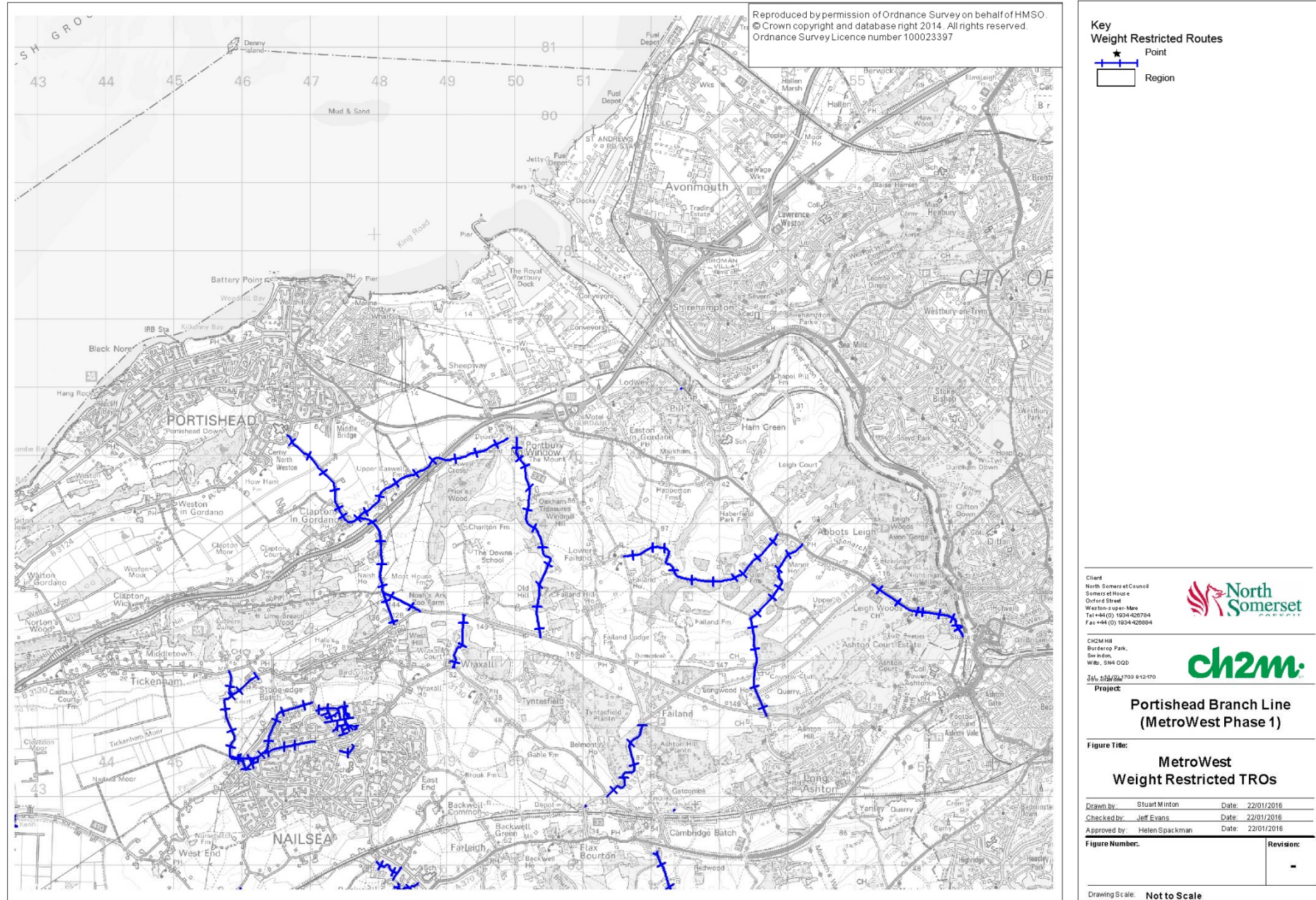


Figure 4-25: Weight restrictions

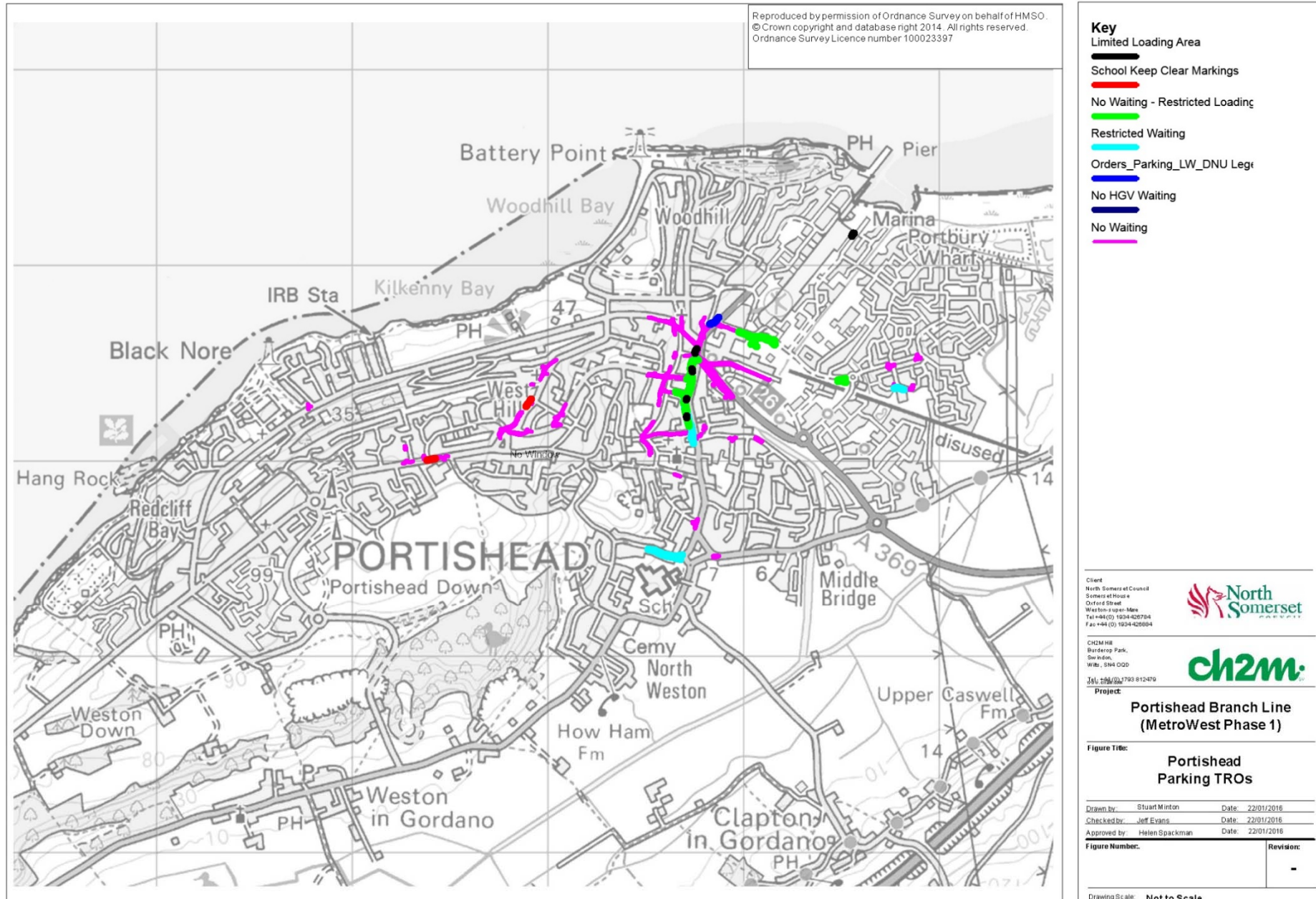


Figure 4-26: Parking restrictions in Portishead

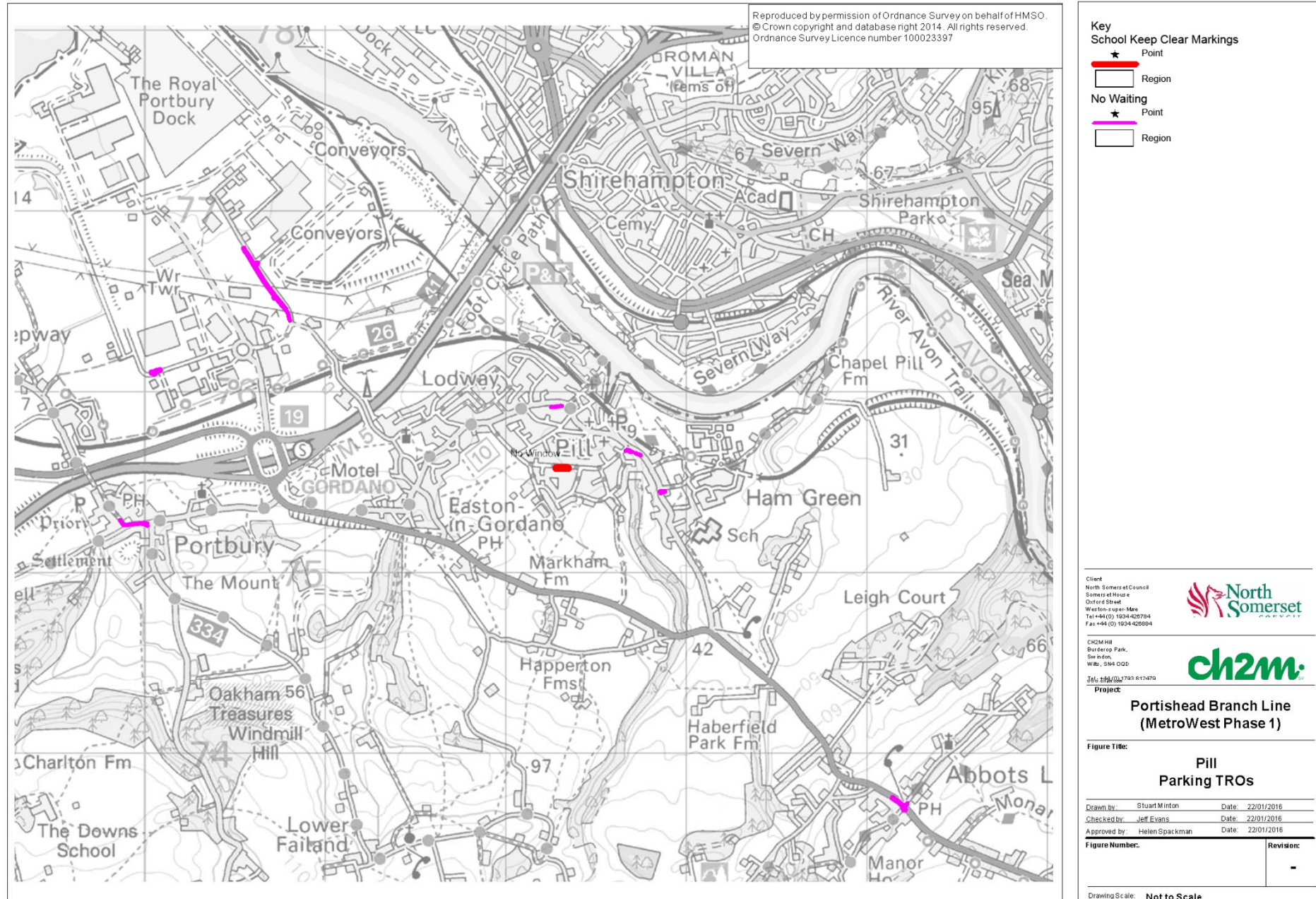


Figure 4-27: Parking restrictions in Pill

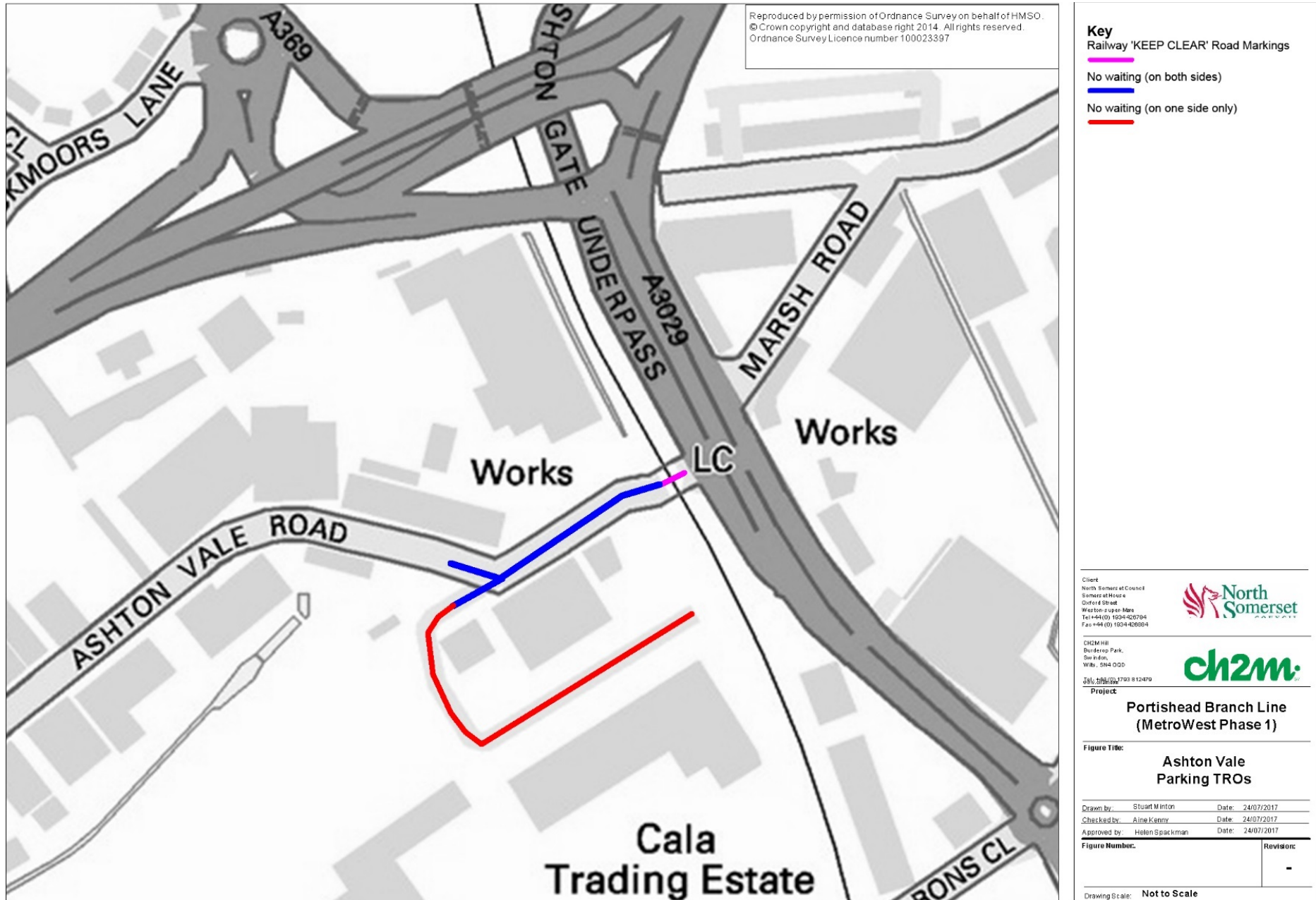


Figure 4-28: Parking restrictions in Ashton Vale

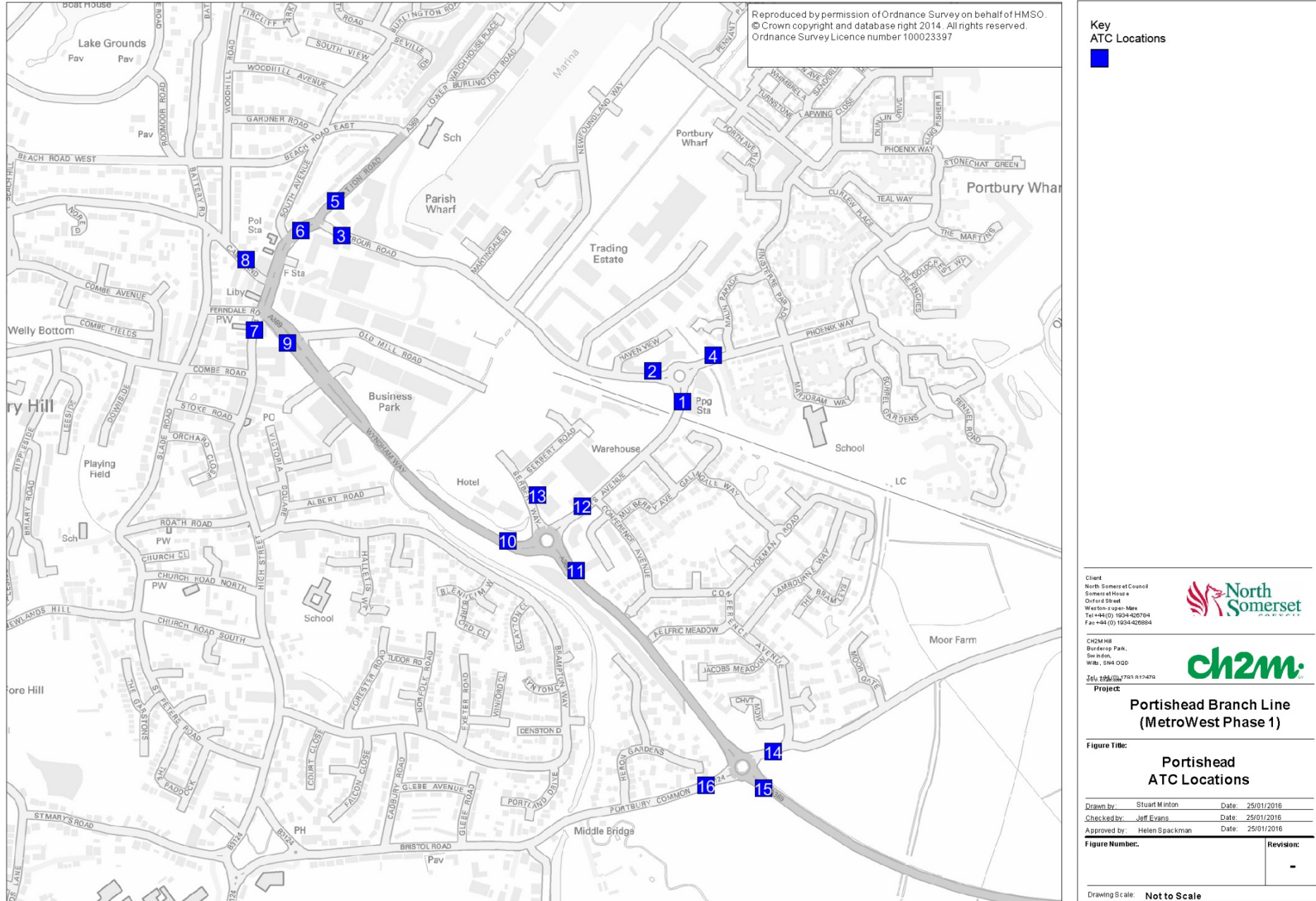


Figure 4-29: ATC Locations in in Portishead

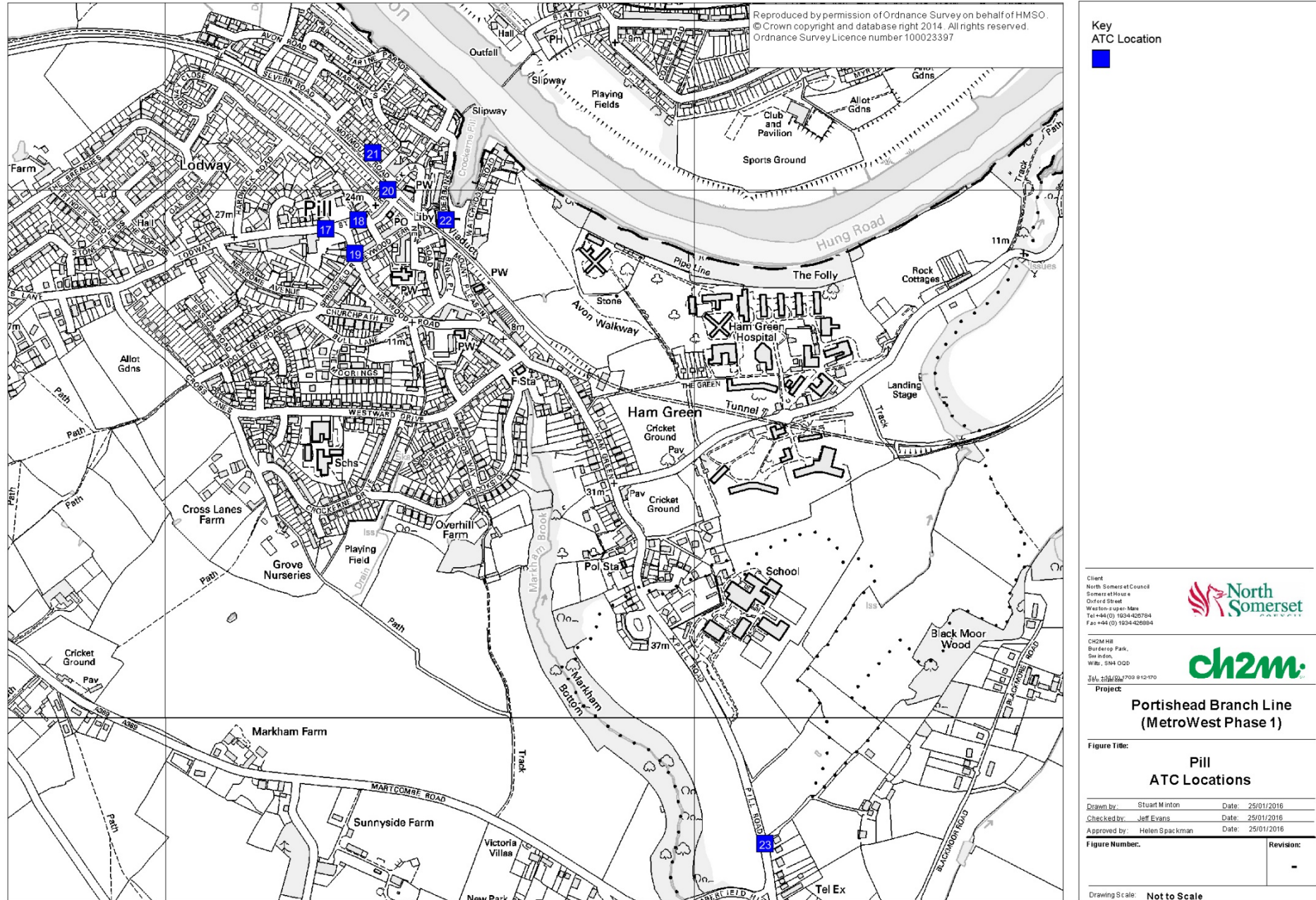


Figure 4-30: ATC Locations in Pill

Located in Part 1 of Appendix 16.1

Figure 4-31: Baseline AM and PM traffic flows in Portishead (Passenger Car Unit (PCUs))

Located in Part 1 of Appendix 16.1

Figure 4-32: Baseline AM and PM traffic flows in Pill (PCUs)

Located in Part 1 of Appendix 16.1

Figure 4-33: Comparison of counts: Quays Avenue (Site 1)

Located in Part 1 of Appendix 16.1

Figure 4-34: Comparison of counts: Wyndham Road (Site 9)

Located in Part 1 of Appendix 16.1

Figure 4-35: Comparison of counts: Quays Avenue (Site 12)

Located in Part 1 of Appendix 16.1

Figure 4-36: Comparison of counts – A369 Portbury Hundred (Site 15)

Located in Part 1 of Appendix 16.1

Figure 4-37: Comparison of counts: Lodway (Site 17)

Located in Part 1 of Appendix 16.1

Figure 4-38: Comparison of counts: Pill Road (Site 23)